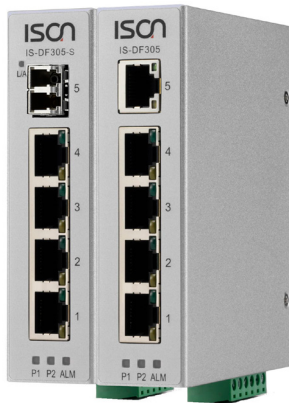


# IS-DF305 Series

## 5-port Fast Ethernet Unmanaged Layer 2 Industrial Ethernet Switch



The ISON IS-DF305 Series are cost-effective unmanaged Fast Ethernet Switches that provide both copper and fiber connectivity according to field needs. With plug-n-play, easy to use, and its compact size, the IS-DF305 Series can easily be used in factory production line, embedded into machine system or applied for any simple network expansion. The IS-DF305 Series provide default network protection functions such as broadcast storm protection function, which can prevent unexpected traffic flood to the network. The IS-DF305 Series is the perfect solution for general application and edge site installation.



### Key features

- ▶ 5 / 4 10/100Mb Copper ports with 0 / 1 100FX Single/Multi-mode ports
- ▶ IEEE 802.3x flow control & back-pressure
- ▶ Layer 2 Line-Speed Switching Fabric, non-blocking
- ▶ Broadcast Storm Protection
- ▶ Wide-temperature range (-40~75°C)
- ▶ 2KV Surge immunity on RJ45 ports
- ▶ 1.5KV Hipot for port isolation
- ▶ Redundant power input (12~58 VDC)
- ▶ Reverse power protection
- ▶ Din-Rail or wall mount installation
- ▶ Relay Output Alarm
- ▶ IP 30 Protection
- ▶ Rugged Fanless design

### Specification

#### Ethernet

Operating Mode	Store and Forward, L2 wire-speed/non-blocking switching engine
MAC addresses	1K
Packet Buffer	1 Mbits
Backplane / Switching Fabric	1Gbps

#### RJ45 Copper ports

Speed	10/100 Mbps
MDI/MDIX Auto-crossover	Support straight or cross wired cables
Auto-negotiation/Duplex	10/100 Mbps speed auto-negotiation; Full & Half Duplex
Ethernet Port Protection	1.5KV VRMS 1minute(Hipot), 2KV surge immunity on RJ45 Copper ports

#### Fiber Ports

Port Types supported	100 Base Fix type SFP
Fiber port connector	LC connector for fiber ports
Optimal fiber cable	Typical 50 or 62.5/125 $\mu\text{m}$ for multimode (mm) Typical 8 or 9/125 $\mu\text{m}$ for single mode (sm)

#### Protocols & Standards

IEEE 802.3 , IEEE 802.3x, Flow Control, Back Pressure, TCP/UDP

## Power

Power Input	Redundant Power Input, DC Input, Terminal Block
Input Voltage Range	12-58 VDC
Reverse power protection	YES
Power Consumption	IS-DF305 3.5 Watt, IS-DF305-M 5 Watt, IS-DF305-S 5.5 Watt

## Indicators

Power status indication	Power Input status
Ethernet port indication	Link & speed

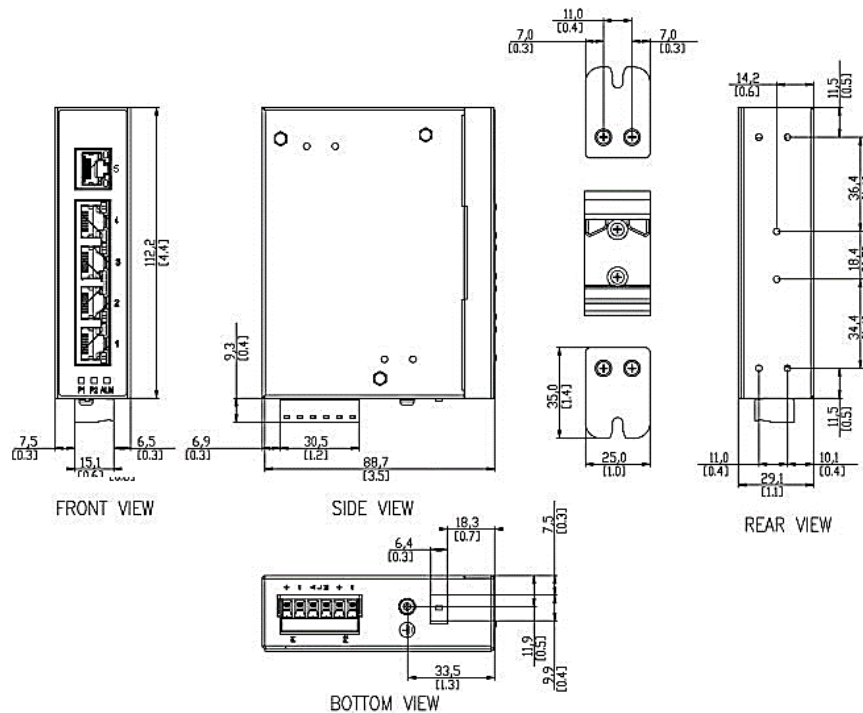
## Environmental and Compliances

Operating Temperature	-40~75°C (Cold startup at -40°C)
Storage Temperature	-40~85°C
Humidity	5~95% (Non-Condensing)
Vibration, shock, free fall	IEC-60068-2-6, -27, -32
Certification Compliance	CE, FCC
Electrical safety	UL 60950-1, CSA C22.2 No. 60950-1, EN 60950-1
Marine	DNV, GL
EMC	FCC Part 15, CISPR 22 (EN55022) Class A IEC-61000-4-2, -3, -4, -5, -6 (Level 3)
RoHS & WEEE	RoHS (Pb free) and WEEE Compliant
MTBF	>25 years

## Mechanical

Protection	IP30
Dimension	109.2mm(H) x 29.1mm (W) x 89.4mm (D) ( without DIN rail kit)
Weight	290 g
Installation	DIN-Rail mounting; Wall mounting
Relay Output	1A, 24V, Normal Open

## Dimension Diagram



## Ordering Information

Available Models	Description	10/100Mb TX	100Mb FX
IS-DF305	Industrial 5 port 10/100 Mb Layer 2 unmanaged Ethernet Switch	5	0
IS-DF305-M	Industrial 5 port 10/100 Mb Layer 2 unmanaged Ethernet Switch, LC connector, 2km	4	1
IS-DF305-S	Industrial 5 port 10/100 Mb Layer 2 unmanaged Ethernet Switch, LC connector, 40km	4	1

## Accessories

1. IS-RK2U 19" rack mount kit
2. IS-RK4U 19" rack mount kit
3. IS-PS20-12 Power adaptor

## Package Checklist

- IS-DF305 Switch
- Quick Installation Guide (Printed)
- Wall Mount kit /Din-Rail kit