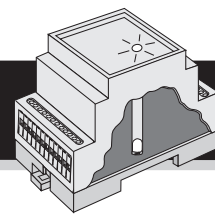
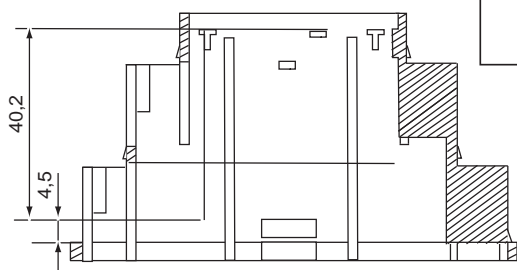
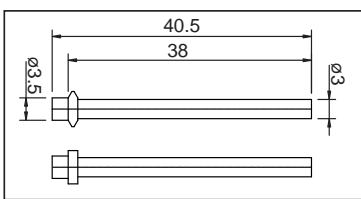
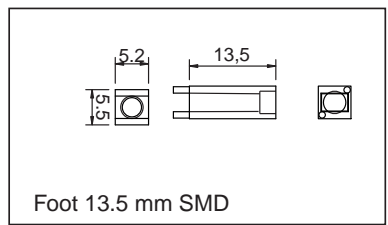
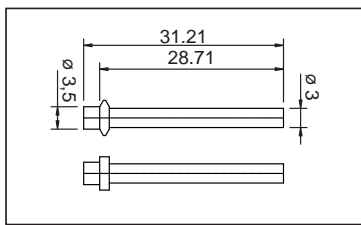
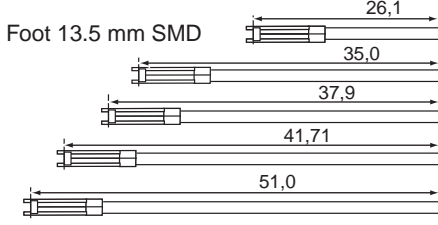
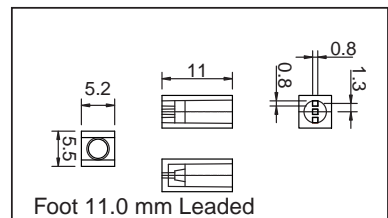
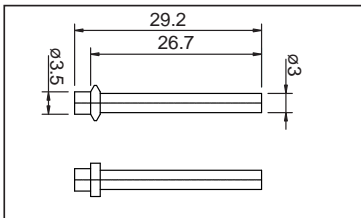
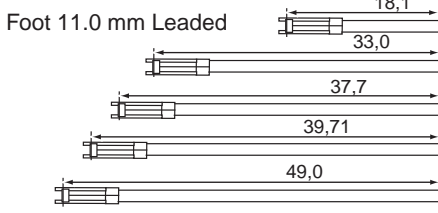
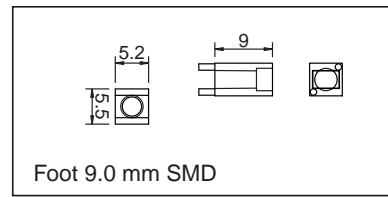
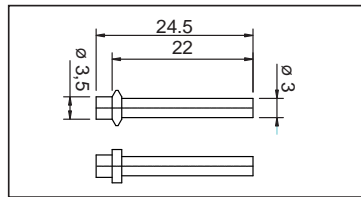
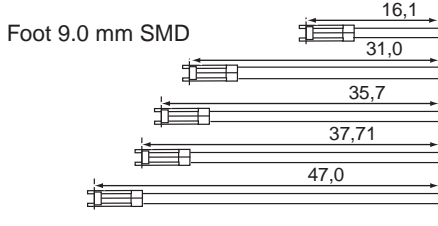
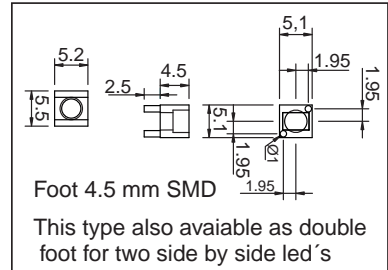
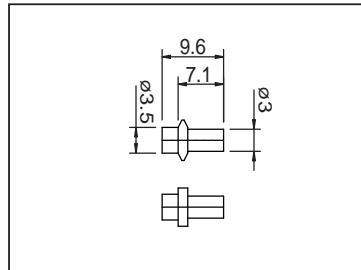
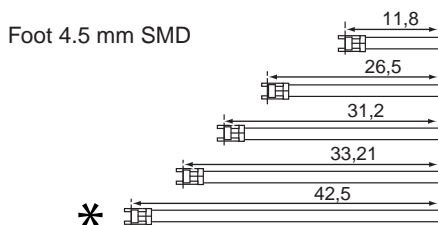


# LIGHT CONDUCTORS



Ø 3mm light conductors for SMD or Leded Led's for transporting the light from the PCB to the front of the enclosure. - 5 different types can be combined into 20 different length from 11,8 mm to 51 mm including special length to fit most of Bernic's enclosures.



\* For Din Rail Enclosures from base PCB to front

Total length	4,5 mm foot	11,6	26,5	31,2	33,21	42,5 *
Order Code:	SMD	p/n 4972301250	p/n 4972301251	p/n 4972301252	p/n 4972301253	p/n 4972301254
Total length	9,0 mm foot	16,1	31,0	35,7	37,71	47,0
Order Code	SMD	p/n 4972301255	p/n 4972301256	p/n 4972301257	p/n 4972301258	p/n 4972301259
Total length	11,0 mm foot	18,1	33,0	37,7	39,71	49,0
Order Code	LEADED	p/n 4972301260	p/n 4972301261	p/n 497301262	p/n 4972301263	p/n 4972301264
Total length	13,5 mm foot	20,6	35,5	40,2	42,21	51,5
Order Code	SMD	p/n 4972301265	p/n 4972301266	p/n 4972301267	p/n 4972301268	p/n 4972301269

● All measurements are in mm.